



MARIMBA AUTO LLC

INTRODUCTION

- Marimba Auto LLC is a vehicle components manufacturer, Specialized in inhouse manufacturing as well as global sourcing.
- Company was formed in 2003.
- IATF 16949/ ISO 9001 Certified.
- Minority Business Enterprise Certified.
- Management with extensive Automotive Experience.
- Total Employees 100 + in North America and Globally 350 + Associates.

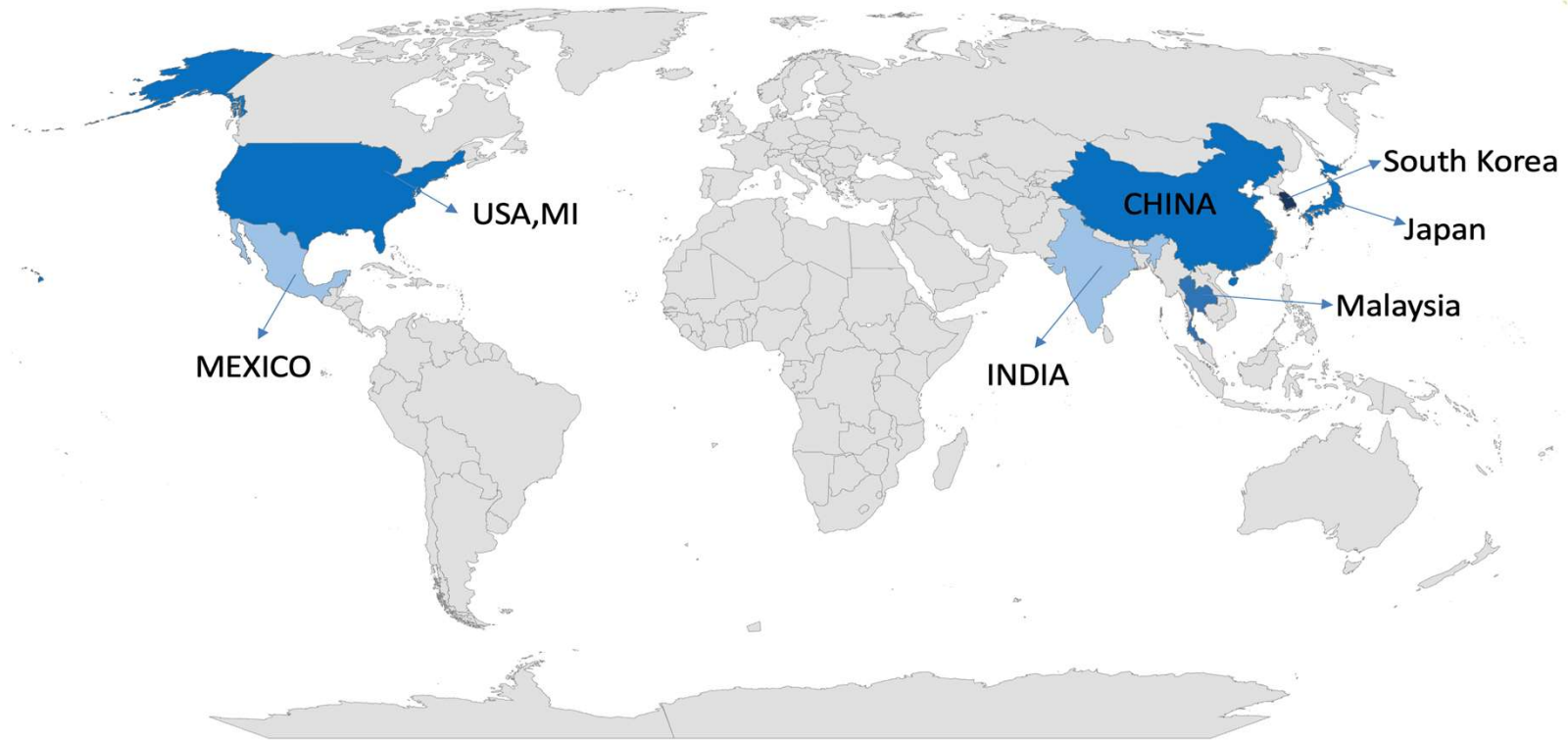
MILESTONES

- 2003 - Marimba Established
- 2004 - Minority certification
- 2004 - ISO 9001 Certification
- 2006 - TS 16949 Certification
- 2007 - Added Automotive hardboard to product portfolio
- 2009 - Developed process for a Major OEM
- 2011 - US Patent - US 7896601 for 2-piece fastener
- 2012 - Added precision machined forged parts to product portfolio
- 2013 - Received Quality Achievement Award Under 15PPM from Tier 1 Customer
- 2014 - CTPAT (Customs Trade Partnership Against Terrorism) Certification
- 2015 - Added Transmission Products
- 2015 - Added Aluminum Extrusions
- 2016 - Marimba Auto Received Value Improvement Award from Tier 1 Customer
- 2017 - New World Head Quarters
- 2018 - Opening of World HQ of 140,000 Square Foot facility at Canton, MI
- 2018 - Became FTZ (Foreign Trade Zone)
- 2018 - IATF 16949 : 2016 Certification
- 2018 - Added Engine Components
- 2019 - PLEX ERP Implementation
- 2020 - Opened Office in India

END CUSTOMERS



GLOBAL FOOTPRINT



VALUE PROPOSITION



Taking full responsibility for **quality**.
IATF 16949/ ISO 9001 Certified.



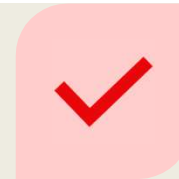
Ensure timely **delivery** and handling
all aspects of getting inventory to
North America.



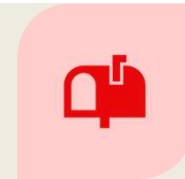
We manage **inventory** including
cost of capital and product delivery
to customers per their requirements.



We have **local presence** and just a
phone call away and can be at our
customers location within hours.



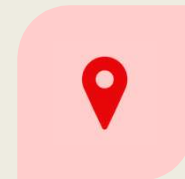
QUALITY



LOCAL
PRESENCE

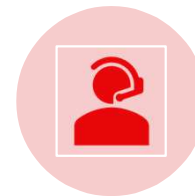
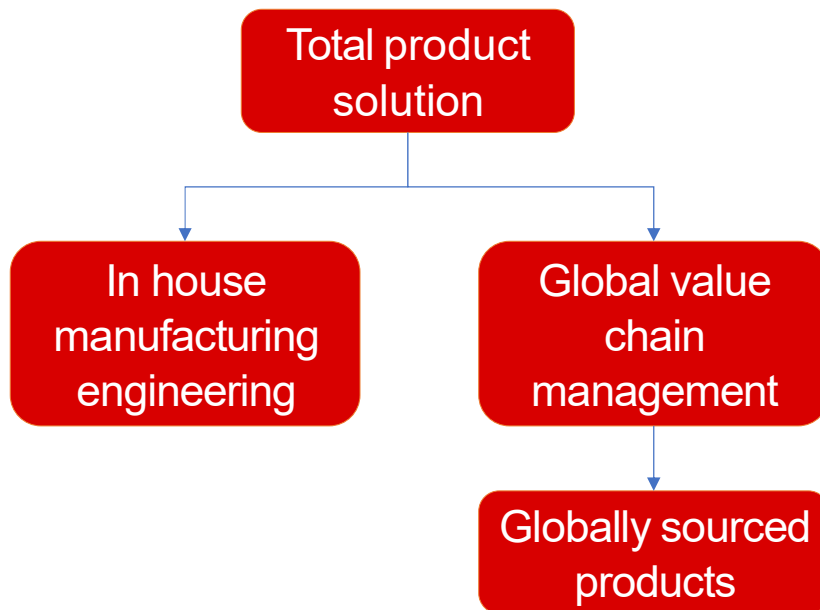


DELIVERY



INVENTORY

BUSINESS MODEL



CUSTOMER FIRST



PROVIDE BEST SOLUTIONS TO THE CUSTOMER



PERFORM MAKE-BUY ANALYSIS



TAKE FULL RESPONSIBILITY FOR QUALITY, INVENTORY AND DELIVERY

ENGINEERING DESIGN & ANALYSIS



- Strong engineering team to design & develop effective and economical manufacturing processes to produce prototype and production components that satisfy customer requirements.
- State of the art tool room to support manufacturing, material testing and inspection.

- Fasteners designed and developed in-house
- US Patent # 12/357,790
- These fasteners are currently used successfully in a major mini-van platform for seating application

IN HOUSE MATERIAL ANALYSIS

**Weld Cut
&
Etch Analysis**

**Contamination
Inspections**

Torque Testing

Tensile Testing

**X-Ray for
Porosity and
Cavities**

**Inspection
Services**



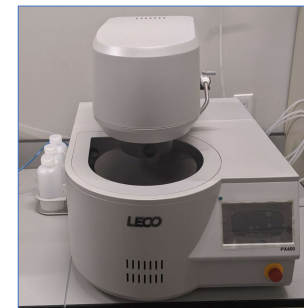
IN HOUSE QUALITY LAB EQUIPMENTS



LECO MSX250 Sectioning Machine



LECO MX500 Mounting Press



LECO PX400 Grinder/Polisher



LECO AMH55 Micro hardness Tester



LECO LR310 Rockwell type
Hardness Tester



LECO GDS900 Glow Discharge
Spectrometer

IN HOUSE QUALITY LAB EQUIPMENTS



Keyence VR 5200



Zeiss Microscope & Olympus SZX7 Zoom Stereo Microscope



Keyence IM7030-T



Zeiss Accura CMM



X-Ray Machine



Optical Comparator



Roughness and Contour Tester



Keyence VHX-7000

GLOBAL SUPPLY CHAIN MODEL

PHASE I

SELECTION

- Supplier Audits
- Supplier Selection

PHASE II

LAUNCH

- Sourcing
- APQP & PPAP
- Safe Launch
- Material Ramp up/
Inventory
Management

PHASE III

PRODUCTION

- Traceability
- FIFO
- Supplier Performance
- Corrective /
Preventive Actions

IN HOUSE MANUFACTURING CAPABILITIES



Hyundai WIA CNC machines



350 Ton Die Cutting Press



Robotic Welding



Drilling Machine



Tube Straightening & Cut off Machine

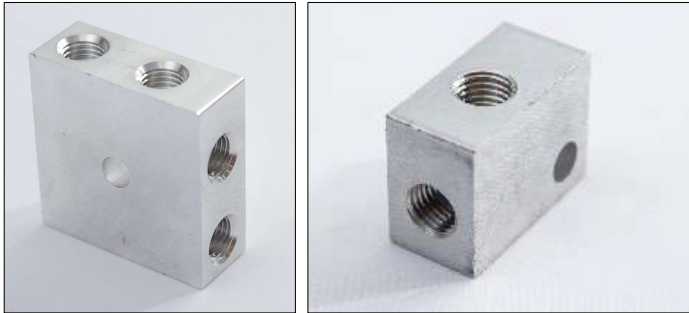


Chamfering Machine

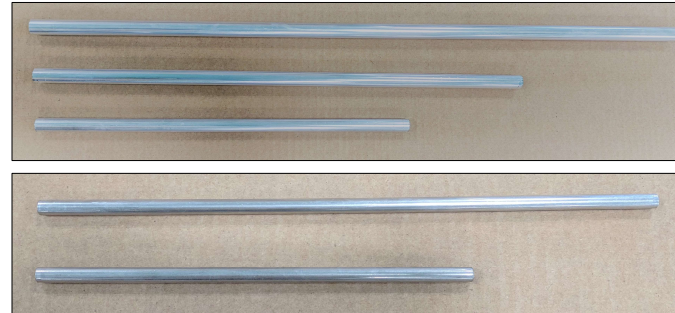


Lathe machine

IN HOUSE MANUFACTURED PRODUCTS



Machined Components



Aluminum & Steel Tubing & Welded Assy



Hard Board Assy



Carpet Hard Board Assy

OUR PRODUCT PORTFOLIO



TRANSMISSION COMPONENTS

- Aluminum die Castings
- Cold Forgings
- Precision Machined and Ground Tubing
- Plastic Moldings and Machined Shafts



STEERING COMPONENTS

- Drawn Over Mandrel Steel Tubes
- Formed Tubes
- Cold Formed Bolts
- Aluminum Die Castings
- Precision Machined Shafts



ENGINE COMPONENTS

- Cold Forged Machined Parts
- CNC Machined Parts with Heat treatment

OUR PRODUCT PORTFOLIO



BRAKING COMPONENTS

- Cold Formed Machined Parts
- Aluminum Machine Parts
- Zinc Coated welded assemblies



SEATING COMPONENTS

- Welded Steel Assembly
- Seamless Tubes
- Machined & Profile Rods
- Hardboard Assemblies



FLUID HANDLING COMPONENTS

- Sheet Metal Stamping & AL Anodized Parts
- Cold Forged Machined Parts
- CNC Machined Parts with Heat treatment

OUR PRODUCT PORTFOLIO



SUSPENSION COMPONENTS

- Cold Forged Machined Parts
- CNC Machined Parts
- Welded Assembly



STRUCTURAL COMPONENTS

- DOM, ERW & Seamless Tubes
- Capture Cable



NON - AUTO PARTS

- Hot Forged Machined Parts
- Investment Casting Parts
- Plastic Molded parts

FOREIGN TRADE ZONE

Foreign Trade Zone (FTZ) Certified Facility FTZ Zone No. 70 - Zone Site 75.

- **Duty Deferral:** Duties are only paid when imported merchandise enters U.S. Customs territory. Goods may be held without payment of duty in an FTZ until sold, allowing for improved cash flow.
- **Duty Avoidance:** There are no duties on FTZ merchandise that is exported, transferred to another zone, or destroyed. This eliminates the need to manage costly and time-consuming duty drawback programs.
- **No Duty on Value Added:** There are no duties on labor, overhead, or profit to operations performed within an FTZ.
- **Enhanced Security:** FTZ and Customs Trade Partnership Against Terrorism (CTPAT) are complementary programs which Marimba is certified in & Participating in both results in increased internal and external security enhancements.

CERTIFICATIONS



Certificate of Registration

This certifies that the Quality Management System of

Marimba Auto LLC
41150 Van Born Rd
Canton, Michigan, 48188, United States

has been assessed by NSF-ISR and found to be in conformance to the following standard(s):

IATF 16949:2016

Scope of Registration:
Manufacture of Metal Tube and Seating Components.

Exclusions: Product Design

IATF Certificate Number: 0436630
Certificate Number: C0107557-7S6
Certificate Issue Date: 02-DEC-2021
Registration Date: 01-DEC-2021
Expiration Date *: 30-NOV-2024



Jennifer Morecraft,
Senior Managing Director



NSF International Strategic Registrations
789 North Dixboro Road, Ann Arbor, Michigan 48105 | (888) NSF-9000 | www.nsf-isr.org

Authorized Registrations and/or Accreditation Mark. This certificate is property of NSF-ISR and shall remain the property of NSF-ISR. *Company is subject to continuous or regular surveillance. To verify registration call (888) NSF-9000 or visit our web site at www.nsf-isr.org



Certificate of Registration

This certifies that the Quality Management System of

Marimba Auto LLC
41150 Van Born Rd
Canton, Michigan, 48188, United States

has been assessed by NSF-ISR and found to be in conformance to the following standard(s):

ISO 9001:2015

Scope of Registration:
Manufacture of Metal Tube and Seating Components.

Certificate Number: C0107557-1S5
Certificate Issue Date: 02-DEC-2021
Registration Date: 01-DEC-2021
Expiration Date *: 30-NOV-2024



Jennifer Morecraft,
Senior Managing Director



NSF International Strategic Registrations
789 North Dixboro Road, Ann Arbor, Michigan 48105 | (888) NSF-9000 | www.nsf-isr.org

Authorized Registrations and/or Accreditation Mark. This certificate is property of NSF-ISR and shall remain the property of NSF-ISR. *Company is subject to continuous or regular surveillance. To verify registration call (888) NSF-9000 or visit our web site at www.nsf-isr.org

THIS CERTIFIES THAT

Marimba Auto, LLC



* Nationally certified by the: **MICHIGAN MINORITY SUPPLIER DEVELOPMENT COUNCIL**

*NAICS Code(s): **331210**

* Description of their product/services as defined by the North American Industry Classification System (NAICS)

11/28/2023	MI01809
Issued Date	Certificate Number
02/01/2025	
Expiration Date	



Ying McGuire
NMSDC CEO and President



Michelle Sourie Robinson,
President & CEO

By using your password (NMSDC issued only), authorized users may log into NMSDC Central to view the entire profile: <http://nmsdc.org>

[Certify, Develop, Connect, Advocate.](#)

* MBEs certified by an Affiliate of the National Minority Supplier Development Council, Inc.®

SUSTAINABILITY

HIGHLIGHTS:

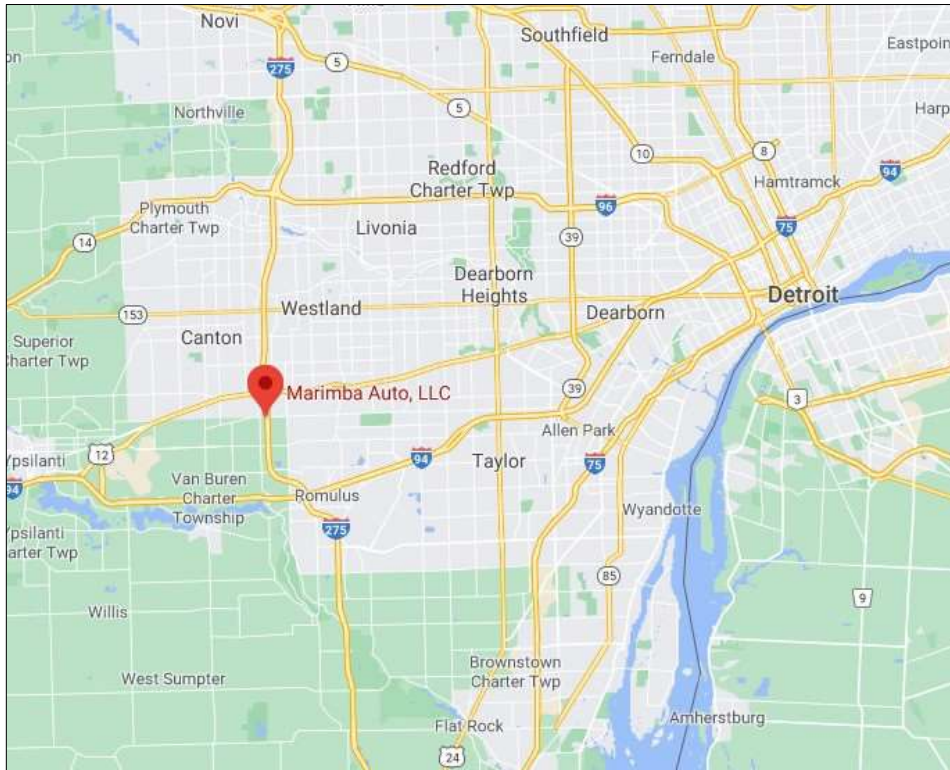
- Solar panels installed on Marimba Canton Facility Rooftop
- Total Capacity: 220 kW_{DC} with 150 kW_{AC} Inverter
- Annual Generation: 282,544.5 kWh
- 408 PV Modules



AWARDS



CONTACT US



SALES@MARIMBAAUTO.COM



LOGISTICS@MARIMBAAUTO.COM



QUALITY@MARIMBAAUTO.COM



JOBS@MARIMBAAUTO.COM



<https://marimbaauto.com/>



41150 Van Born Rd, Canton, MI 48188

SUMMARY



- ✓ Local Presence
- ✓ Excellent Quality History
Less than 7ppm average
- ✓ Quality & Minority Certified
IATF16949:2009 & ISO 9001:2008
Minority Business Enterprise
- ✓ Global Sourcing Specialist

**Specialized supplier with diversified
product portfolio and proven track record**